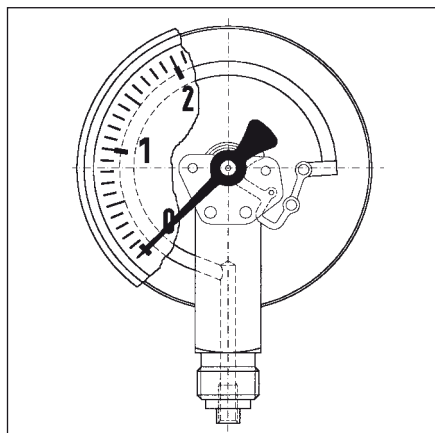


Bourdon tube pressure gauges with electrical contacts, nominal size 50



Application

For aggressive gaseous and liquid media which are not highly viscous and do not crystallize. For measurement in areas with limited space. Especially suitable for monitoring minimum pressure in gas cylinders together with AFRISO alarm unit for low gas level (refer to page 373).

Type

D 9

Nominal size

50

Accuracy class (EN 837-1/6)

1.6

Ranges (EN 837-1/5)

-1/+1.5 to -1/+15 bar
0/2.5 to 0/400 bar

Application area

Static load:

$\frac{3}{4}$ x full scale value

Dynamic load:

$\frac{2}{3}$ x full scale value

Short term:

full scale value

Contact types

Sliding contact (SK)

Minimum measuring ranges

Contact

SK single

2.5 bar

SK change-over contact 16 bar
(up to 60 bar max.)

Switching point

Exact details of the switching point are required to ensure optimum operation.

Operating temperature range

Medium: $T_{max} = +150\text{ }^{\circ}\text{C}$

Ambient: $T_{min} = -20\text{ }^{\circ}\text{C}$

$T_{max} = +60\text{ }^{\circ}\text{C}$

Temperature performance

Indication error when the temperature of the measuring element deviates from 20 °C:

rising temp. approx. $\pm 0.4\text{ } \%/10\text{K}$

falling temp. approx. $\pm 0.4\text{ } \%/10\text{K}$

percentage of full scale value

Protection

IP 42 (EN 60529)

Standard version

Connection

Stainless steel 316 Ti or 316 L, bottom

G $\frac{1}{4}$ B – spanner size 14
(EN 837-1/7.3)

Electrical connection

Cable gland, 2 m cable

Measuring element

Bourdon tube, stainless steel 316 Ti or 316 L

$\leq 60\text{ bar}$ „C“ type bourdon tube

$> 60\text{ bar}$ helical tube

Movement

Stainless steel

Dial

Aluminium, white

Dial marking black

Pointer

Aluminium, black

Housing

Stainless steel 304 with rear blow-out according to EN 562

Crimped bezel

Stainless steel 304

Contact cover

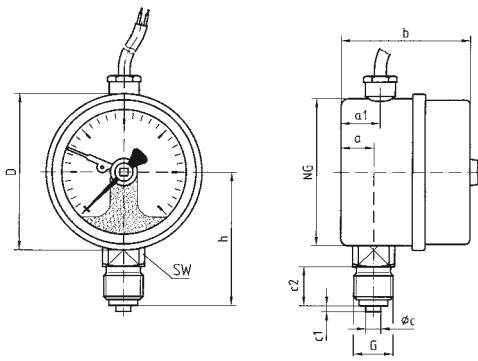
Makrolon, with contact adjustment lock

Options

- Wetted parts oil and grease free
- Damping screw

Bourdon tube pressure gauges with electrical contacts, nominal size 50 Type D 9

Housing types and dimensions

<p>Bottom connection</p> 	

Dimensions (mm)

Nominal size (NG)	a	a1	b	Øc	c1	c2	D	G	h	SW					
50	10.5	13	43	5	2	13	53	G1/4B	46	14					