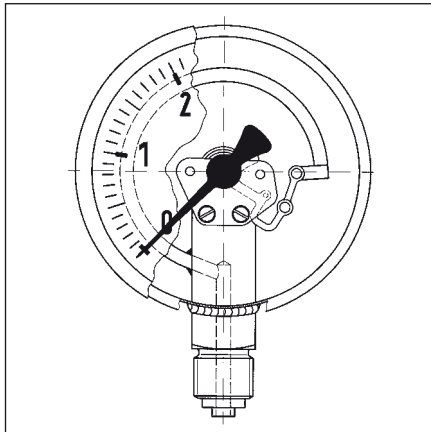


Bourdon tube pressure gauges for chemical applications EN 837-1



Application

For aggressive gaseous and liquid media which are not highly viscous and do not crystallize. Suitable for use in corrosive atmospheres.

! When measuring gas or vapour, the instruments must be used in accordance with the safety recommendations of EN 837-2 (see appendix).

Type

D 4

Nominal size

100 – 160

Accuracy class (EN 837-1/6)

1.0

Ranges (EN 837-1/5)

-1/0 to -1/+15 bar

NG 100 0/0.6 to 0/1,000 bar

NG 160 0/0.6 to 0/1,600 bar

Application area

Static load:

≤ 600 bar = full scale value

> 600 bar = 3/4 x full scale value

Dynamic load:

≤ 600 bar = 0.9 x full scale value

> 600 bar = 2/3 x full scale value

Short term:

≤ 600 bar = 1.3 x full scale value

> 600 bar = full scale value

Operating temperature range

Medium: $T_{max} = +150\text{ °C}$

Ambient: $T_{min} = -20\text{ °C}$

$T_{max} = +60\text{ °C}$

Temperature performance

Indication error when the temperature of the measuring element deviates from 20 °C:

rising temp. approx. $\pm 0.4\text{ \%}/10\text{ K}$

falling temp. approx. $\pm 0.4\text{ \%}/10\text{ K}$

percentage of full scale value

Protection

IP 65 (EN 60529)

with housing vent ($\leq 25\text{ bar}$)

IP 54

Standard version

Connection

Stainless steel 316 Ti or 316 L,

bottom or bottom back

G1/2B – spanner size 22

(EN 837-1/7.3)

Measuring element

Bourdon tube, stainless steel

316 Ti or 316 L

≤ 60 bar „C“ type bourdon tube

> 60 bar helical tube

leak tested (EN 837-1/9.5.6)

Movement

Stainless steel

Dial

Aluminium, white

Dial marking black

Pointer

Aluminium, black

Housing

Stainless steel 304

with blow-out

Bayonet type bezel

Stainless steel 304

Front glass

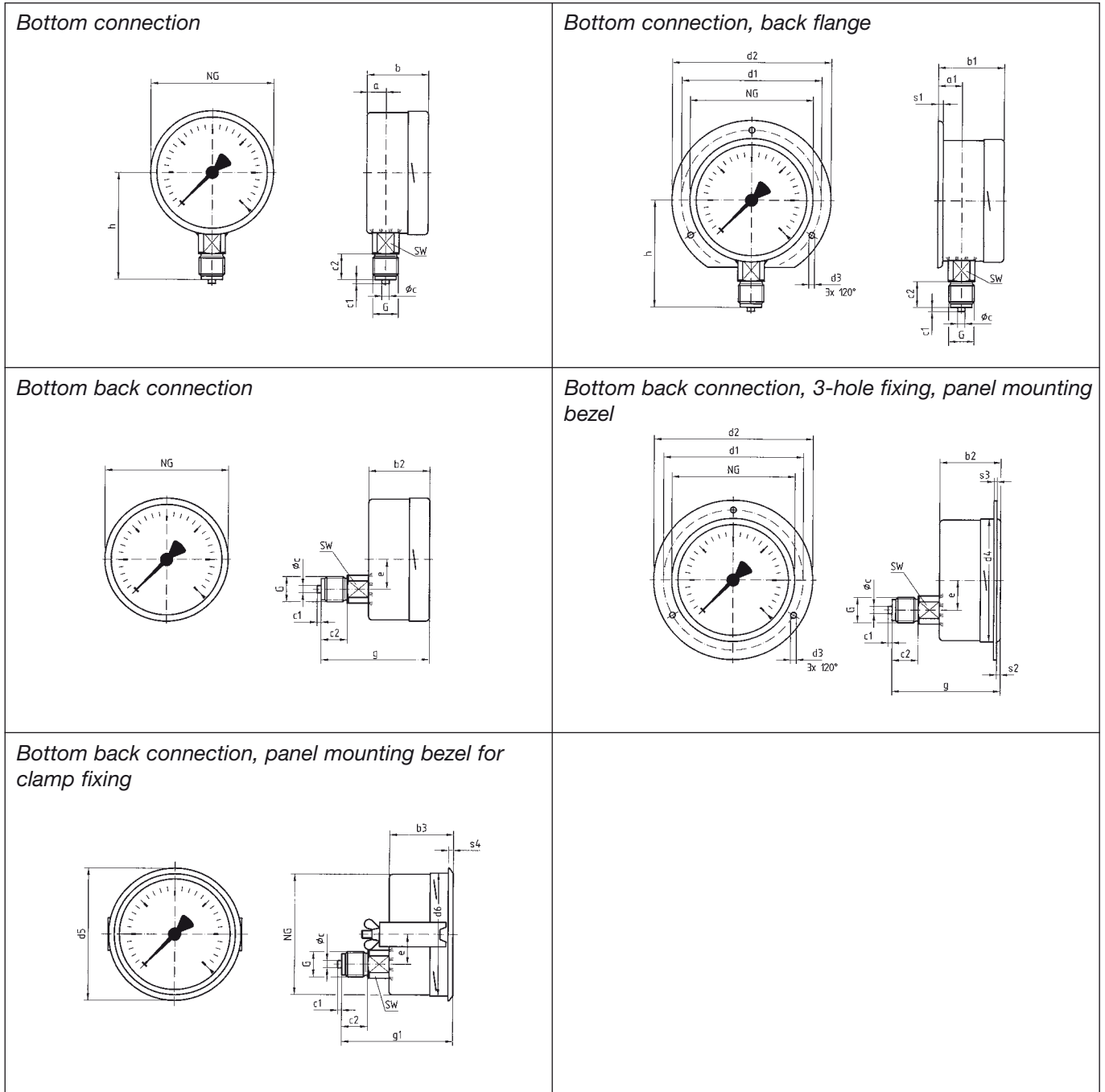
Laminated safety glass

Options

- Brass movement
- Back flange
- Panel mounting bezel for clamp fixing
- 3-hole fixing, panel mounting bezel
- Special scales
- Electrical contacts

Bourdon tube pressure gauges for chemical applications Type D 4 – NG 100/160

Housing types and dimensions



Dimensions (mm)

Nominal size (NG)	a	a ₁	b	b ₁	b ₂	b ₃	Øc	c ₁	c ₂	d ₁ *	d ₂ *	d ₃ *	d ₄	d ₅	d ₆	e	G	g	g ₁	h	s ₁
100	15.6	19.1	49	52.5	49	49	6	3	20	116	132	4.8	104	107	101	34.5	G ¹ /2B	83	83	86	5.5
160	17.5	20.5	50	53	50	52	6	3	20	178	196	5.8	164	167	161	34.5	G ¹ /2B	84	86	116	6
Nominal size (NG)	s ₂	s ₃	s ₄	SW																	
100	4	2	4	22																	
160	4	2	4.5	22																	

* Dimensions according to DIN 16064