

# Bourdon tube pressure gauges for heating/plumbing applications with self-sealing connection thread



## Application

For gaseous and liquid media which are not highly viscous, do not crystallize and do not attack copper alloys.

! When measuring gas or vapour, the instruments must be used in accordance with the safety recommendations of EN 837-2 (see appendix).

## Nominal size

50 – 63 – 80 – 100

## Accuracy class (EN 837-1/6)

NG 50-80: 2.5

NG 100: 1.6

## Ranges (EN 837-1/5)

0/0.6 to 0/25 bar

## Application area

Static load:

$\frac{3}{4}$  x full scale value

Dynamic load:

$\frac{2}{3}$  x full scale value

Short term:

full scale value

## Operating temperature range

Medium:  $T_{max} = +60\text{ }^{\circ}\text{C}$

Ambient:  $T_{min} = -20\text{ }^{\circ}\text{C}$

$T_{max} = +60\text{ }^{\circ}\text{C}$

## Temperature performance

Indication error when the temperature of the measuring element deviates from 20 °C:

rising temp. approx.  $\pm 0.4\text{ } \%$ /10 K

falling temp. approx.  $\pm 0.4\text{ } \%$ /10 K

percentage of full scale value

## Protection

IP 32 (EN 60529)

## Standard version

### Connection

**Self-sealing thread with PTFE ring for safe and fast installation**  
(Attention: 60° chamfer required at female thread)

Brass, bottom or back  
NG 50-63 G $\frac{1}{4}$ B – spanner size 14  
NG 80-100 G $\frac{1}{2}$ B – spanner size 22

### Measuring element

Bourdon tube element, copper alloy  
„C“ type bourdon tube

### Movement

Brass

### Dial

Plastic, white

Dial marking black

### Pointer

Plastic, black

### Housing

Black ABS, highly impact resistant and corrosion resistant

### Front glass

Clip-in plastic

NG 80–100 with adjustable red reference pointer

## Special versions

### Pressure gauge for heating installations NG 50-63-80

for sealed heating systems

Range 0/4 bar

Connection NG 50 G $\frac{1}{4}$ B bottom back

NG 63 G $\frac{1}{4}$ B or G $\frac{3}{8}$ B

bottom or centre back

NG 80 G $\frac{1}{2}$ B bottom or

G $\frac{1}{4}$ B centre back

(with valve G $\frac{1}{4}$  x G $\frac{1}{2}$ )

Dial with red mark at 3 bar and

green sector from 1.5 to 3 bar

Front glass with adjustable red

reference pointer and green flag

### Hydrometer NG 100

Water level indicator for standard heating systems

Ranges 0/0.6 to 0/10 bar

Connection G $\frac{1}{2}$ B bottom

Dual scale, bar outer scale, black,

metres water column

inner scale, black

Front glass with adjustable red reference pointer

## Accessories

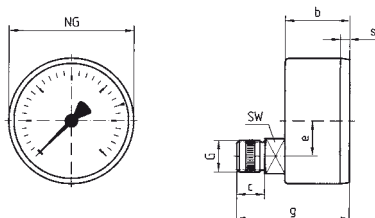
### Mounting valves

with self-sealing coating, automatically close during replacement of gauge to enable fast and cost effective servicing (refer to page 408 „Accessories for pressure gauges“).

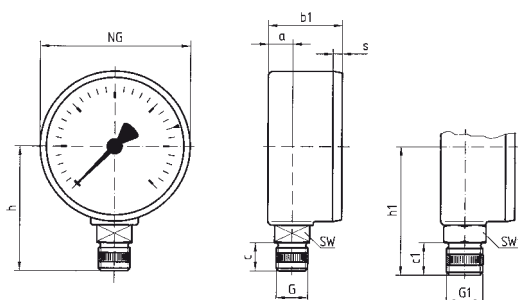
# Bourdon tube pressure gauges for heating/plumbing applications with self-sealing connection thread

## Housing types and dimensions

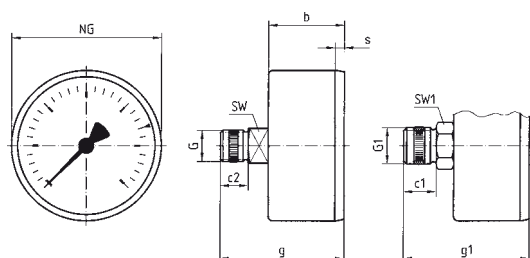
HZ 50 – bottom back connection



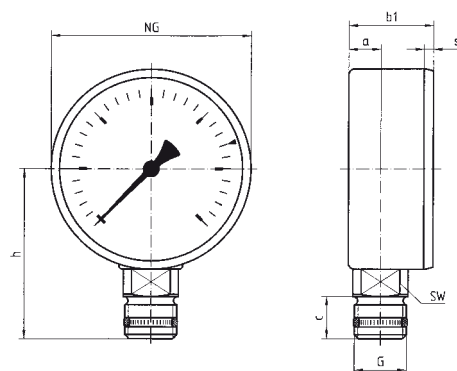
RF 63/HZ 63 – bottom connection



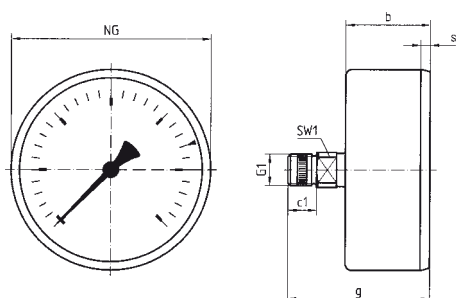
RF/HZ 63 – centre back connection



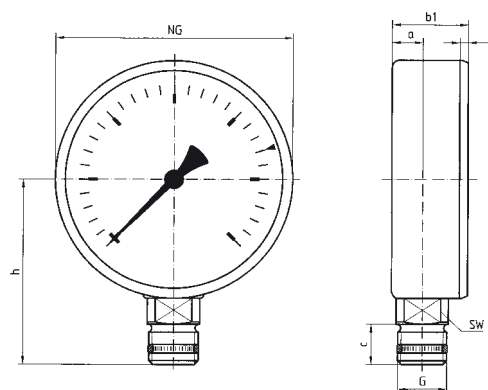
RF 80/HZ 80 – bottom connection



RF 80/HZ 80 – centre back connection



RF 100/HY 100 – bottom connection



### Dimensions (mm)

Nominal size (NG)	a	b	b1	c	c1	c2	e	g	g1	G*	G1*	h	h1	s	SW	SW1
50	-	25.8	-	11.2	-	-	14	43	-	G <sup>1</sup> / <sub>4</sub> B	-	-	-	3.8	14	-
63	9.8	30.4	29.7	11.2	13	11.5	-	49.9	50.4	G <sup>1</sup> / <sub>4</sub> B	G <sup>3</sup> / <sub>8</sub> B	49	51.5	3.7	14	17
80	12.8	32.8	32.8	17	11.5	-	-	55.8	-	G <sup>1</sup> / <sub>2</sub> B	G <sup>1</sup> / <sub>4</sub> B	68	-	2.8	22	14
100	15.5	34.5	-	17	-	-	-	-	-	G <sup>1</sup> / <sub>2</sub> B	-	78	-	3.5	22	-

\* Attention: approx. 60° chamfer required at female thread