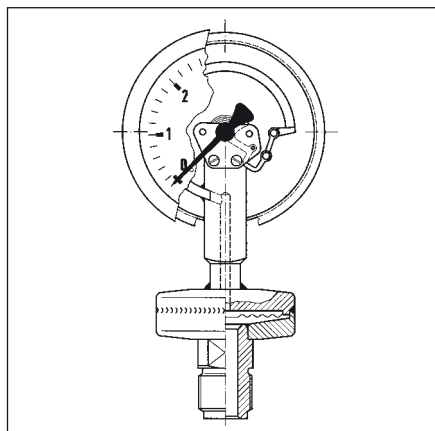


# Diaphragm seals, compact version



Compact version type MD 21



Compact version type MD 22



## Type MD 21

### Application

For use with Bourdon tube pressure gauges, pressure transducers or pressure switches.

For corrosive, hot and polluted media at high pressures. Especially for use in the machinery and chemical industries.

## Options

- Adapter for instrument connection G<sup>1</sup>/<sub>4</sub>/G<sup>1</sup>/<sub>2</sub>
- Cooling element (> 100 °C)
- Capillary tube
- Other threads
- Other materials

## Instrument connection

Welded connection

## Filling liquid

Silicone oil (FM 01)

## Pressure ranges

Refer to price list section

## Nominal pressure

PN 40 to 250

## Technical specifications

### Process connection

Stainless steel 1.4571 (316 Ti)  
G<sup>1</sup>/<sub>2</sub>B to G2B, fixed thread

### Diaphragm

Stainless steel 1.4571 (316 Ti)  
flush mounting, welded flush to upper body

## Type MD 22

### Application

For use with Bourdon tube pressure gauges, pressure transducers or pressure switches.

For corrosive, hot and polluted media at high pressures. Especially for use in the machinery and chemical industries.

## Options

- Adapter for instrument connection G<sup>1</sup>/<sub>4</sub>/G<sup>1</sup>/<sub>2</sub>
- Cooling element (> 100 °C)
- Capillary tube
- Other threads
- Other materials
- Other filling liquids

## Technical specifications

### Process connection

Stainless steel 1.4571 (316 Ti)  
G<sup>1</sup>/<sub>2</sub>B, fixed thread

### Upper and lower part

Stainless steel 1.4571 (316 Ti)  
welded

### Diaphragm

Stainless steel 1.4571 (316 Ti)  
internal, welded

## Instrument connection

Welded connection

## Filling liquid

Silicone oil (FM 01)

## Pressure ranges

Refer to price list section

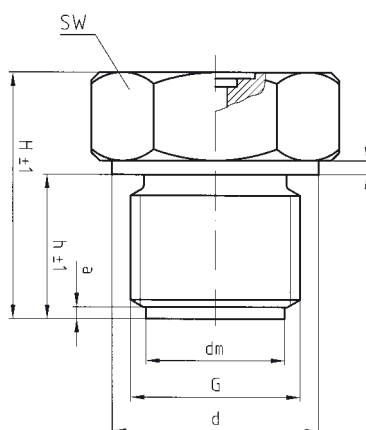
## Nominal pressure

PN 600 to 1000

# Diaphragm seals, compact version

## Types and dimensions (mm)

### Type MD 21



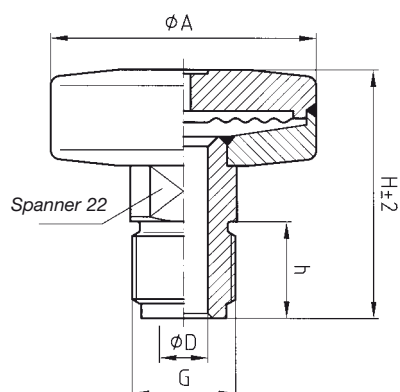
#### Pipe thread according to ISO 228-1

G	d	dm	h	H	a	b	SW
G $1/2$ B	26	17.2	17	33.5	3	3	27
G $3/4$ B	32	23.5	19	34	3	3	32
G1B	39	28	21	36	3	3	41
G $1 1/2$ B	55	40	25	48	3	3	55
G2B	68	50	27	56	3	3.5	70

#### Pipe thread according to ANSI/ASME B1.20.1

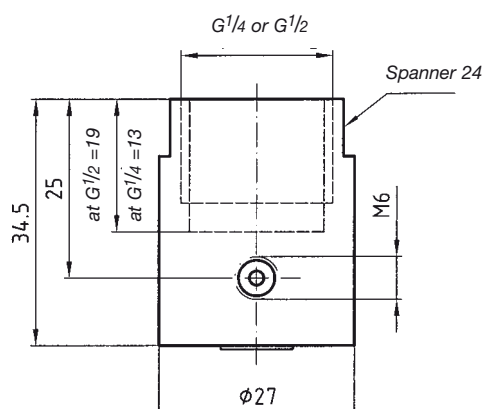
G	d	dm	h	H	a	b	SW
1"NPT	-	23.5	24	36	-	-	41
1 $1/2$ "NPT	-	35	25	45	-	-	55
2"NPT	-	48	26	50	-	-	70

### Type MD 22



PN	G	ØA	ØD	h	H
40	G $1/4$ B	55	6	13	44,5
40	G $3/8$ B	55	6	16	47,5
40	G $1/2$ B	55	10	20	51,5
40	1/4"NPT	55	6	15	46,5
40	1/2"NPT	55	10	20	51,5
250	G $1/4$ B	40	6	13	44,5
250	G $3/8$ B	40	6	16	47,5
250	G $1/2$ B	40	10	20	51,5
250	1/4"NPT	40	6	15	46,5
250	1/2"NPT	40	10	20	51,5

### Adapter for instrument connection G $1/4$ /G $1/2$ with filling port



### Cooling element, can be welded at both ends

