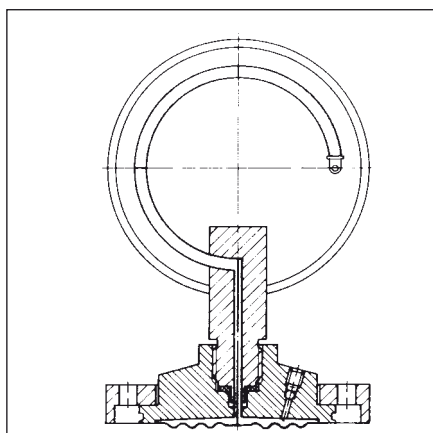


Diaphragm seals plastic version – type MD 10



Type MD 10

Dimensions (in mm)

Application

For use with Bourdon tube pressure gauges or pressure switches. Especially designed for polluted waste water, fertilizers, corrosive media.

Technical specifications

Process connection

PVC, PP, PVDF

Female thread G¹/₂ or G¹/₄

Diaphragm

EPDM, PTFE-coated
internal

Instrument connection

Female thread G¹/₂ or G¹/₄

Screws and nuts

Stainless steel

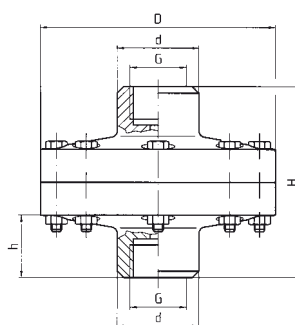
Pressure ranges

Refer to price list section

Operating temperature range

PVC, PP -10 °C/+40 °C

PVDF -10 °C/+50 °C



G	d	D	h	H
G ¹ / ₄	25	72	15	71
G ¹ / ₂	32	100	22	90

Options

- Other process connections
- Other materials